



WE CAN GROW IT! 2012 CALENDAR

DEDICATED TO GROWING
AND EATING LOCALLY
AND SUPPORTING
SUSTAINABLE AGRICULTURE

FEATURING THE ART OF
KAREL K. HENDEE

FEATURING THE SILK ART OF **KAREL K. HENDEE**

Be inspired to grow your own delicious, nutritious, and beautiful food, and support a vital, sustainable agricultural network of farmers, markets, and consumers.

The images created by silk artist Karel K. Hendee depict the journey of farming, harvesting, and enjoying the season's bounty. The artwork is a celebration of the local sustainable farms and farmers of Nevada County, California where the artist lives. Included are inspirational quotes from poets, authors, and experts in the field of farming and cooking with local and seasonal foods. Each month also contains information to guide you in your planting and gardening according to the lunar calendar.

"In this calendar, I hope to express the spirit of the farm, and the people who live and breathe the soil, the sun, and the seasons of the land."
- Karel K. Hendee



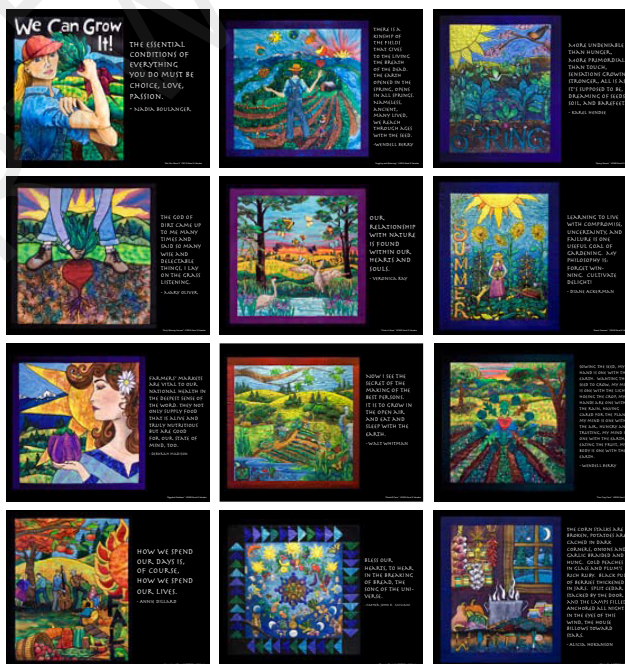
Karel Hendee is an avid gardener, yoga instructor, and silk artist. She also plays the banjo and upright bass. For artist bio and info on purchasing artwork visit www.karelhendee.com

All content ©2011 Karel K. Hendee
Published by Karel Hendee Artworks
karelhendeeartworks@gmail.com
printed in U.S.A.

\$13.99 US

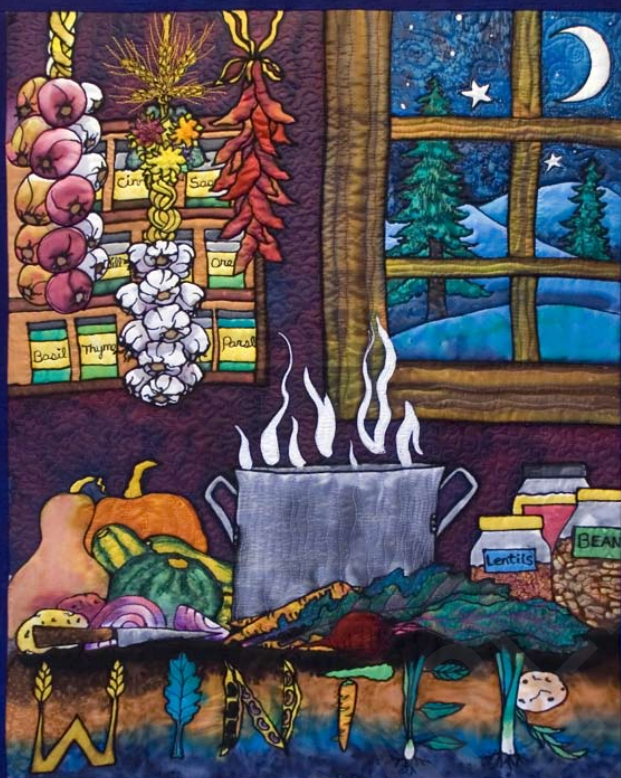


WE CAN GROW IT! 2012 CALENDAR



Karel Hendee Artworks, saved the following resources by using 553 pounds of Primavera Gloss (FSC) and 1653 pounds of Primavera Gloss (FSC), made with an average of 80% recycled fiber and an average of 60% post-consumer waste, elemental chlorine free and manufactured with electricity that is offset with Green-e® certified renewable energy certificates: 15 fully grown trees, 6536 gallons of water, 4 Million BTUs of energy, 396 pounds of solid waste, and 1357 pounds of greenhouse gases. Calculations based on research by Environmental Defense Fund and other members of the Paper Task Force. www.newleafpaper.com





LET FOOD BE
YOUR MEDICINE
AND MEDICINE
BE YOUR FOOD.

- HIPPOCRATES

"Winter Stew" ©2009 Karel K Hendee

December 2011

November 2011							January 2012						
S	M	T	W	T	F	S	S	M	T	W	T	F	S
					1	2	1	2	3	4	5	6	7
6	7	8	9	10	11	12	8	9	10	11	12	13	14
13	14	15	16	17	18	19	15	16	17	18	19	20	21
20	21	22	23	24	25	26	22	23	24	25	26	27	28
27	28	29	30				29	30	31				

Sunday	Monday	Tuesday	Wednesday	Thursday	Friday	Saturday
				1	2	3
PLANT INDOOR FORCING BULBS SUCH AS AMARYLLIS						
4	5	6	7	8	9	10
11	12	13	14	15	16	17
18	19	20	21	22	23	24
	PRUNE SHRUBS AND FRUIT TREES		WINTER SOLSTICE			Christmas Eve
25	26	27	28	29	30	31
Christmas Day	BEGIN NEXT YEAR'S GARDEN PLANNING					New Year's Eve



THE ESSENTIAL
CONDITIONS OF
EVERYTHING
YOU DO MUST BE
CHOICE, LOVE,
PASSION.

- NADIA BOULANGER

"We Can Grow It!" ©2009 Karel K. Hendee

January 2012

December 2011							February 2012						
S	M	T	W	T	F	S	S	M	T	W	T	F	S
					1	2					1	2	3
4	5	6	7	8	9	10	5	6	7	8	9	10	11
11	12	13	14	15	16	17	12	13	14	15	16	17	18
18	19	20	21	22	23	24	19	20	21	22	23	24	25
25	26	27	28	29	30	31	26	27	28	29			

Sunday	Monday	Tuesday	Wednesday	Thursday	Friday	Saturday
1 <i>New Year's Day</i>	2	3	4	5	6	7
8	9 <i>PLANT INDOOR FORCING BULBS SUCH AS AMARYLLIS</i>	10	11	12	13	14
15	16 <i>M.L. King Jr. Day</i>	17	18	19	20	21
22	23 <i>PRUNE FRUIT TREES & VINES</i>	24	25	26	27	28
29	30 <i>CHECK SEED INVENTORY, ORDER SEEDS, AND ENJOY GARDEN PLANNING</i>	31				



THERE IS A
KINSHIP OF
THE FIELDS
THAT GIVES
TO THE LIVING
THE BREATH
OF THE DEAD.
THE EARTH
OPENED IN THE
SPRING, OPENS
IN ALL SPRINGS.
NAMELESS,
ANCIENT,
MANY LIVED,
WE REACH
THROUGH AGES
WITH THE SEED.
-WENDELL BERRY

"Juggling and Balancing" ©2009 Karel K Hendee

February 2012

January 2012							March 2012						
S	M	T	W	T	F	S	S	M	T	W	T	F	S
1	2	3	4	5	6	7						1	2
8	9	10	11	12	13	14	4	5	6	7	8	9	10
15	16	17	18	19	20	21	11	12	13	14	15	16	17
22	23	24	25	26	27	28	18	19	20	21	22	23	24
29	30	31					25	26	27	28	29	30	31

Sunday	Monday	Tuesday	Wednesday	Thursday	Friday	Saturday
			1	2	3	4
PLAN GARDEN, ORDER SEEDS, PREPARE SEED FLATS						
5	6	7	8	9	10	11
PLANT INDOOR SEEDLINGS IN TRAYS AND FLATS 🌱						
12	13	14	15	16	17	18
		Valentine's Day	🌙	PREPARE BEDS, COMPOST, AND CHECK FENCING		
19	20	21	22	23	24	25
	Presidents' Day	●	PRUNE FRUIT TREES & VINES IF STILL DORMANT			
26	27	28	29			
			🌙			



MORE UNDENIABLE
THAN HUNGER,
MORE PRIMORDIAL
THAN TOUCH,
SENSATIONS GROWING
STRONGER, ALL IS AS
IT'S SUPPOSED TO BE,
DREAMING OF SEEDS,
SOIL, AND BAREFEET.

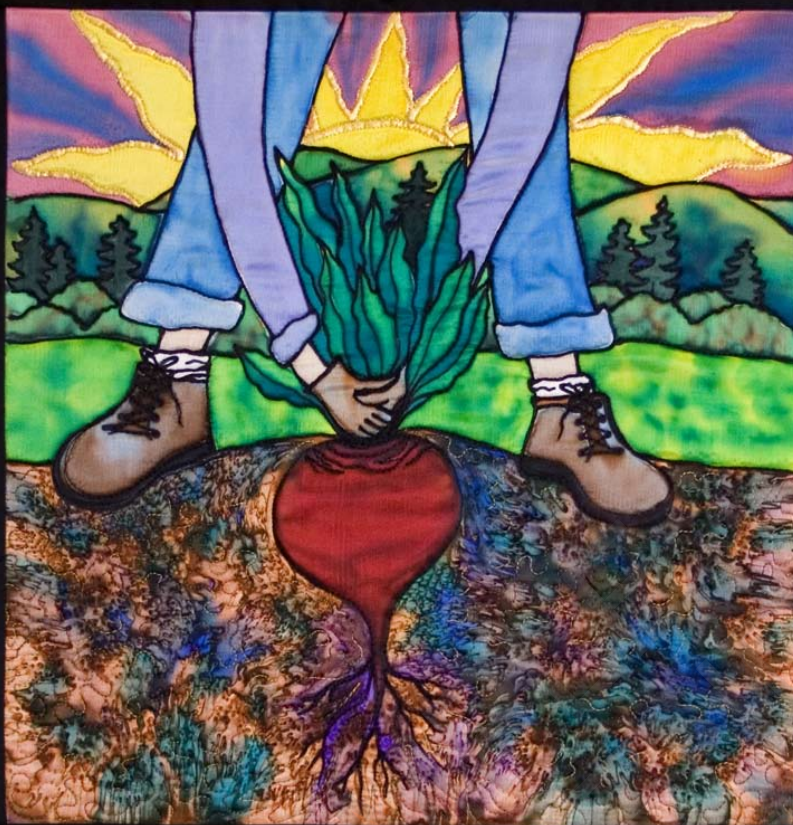
- KAREL HENDEE

"Spring Greens" ©2009 Karel K Hendee

March 2012

February 2012							April 2012						
S	M	T	W	T	F	S	S	M	T	W	T	F	S
				1	2	3	4	1	2	3	4	5	6
5	6	7	8	9	10	11	12	8	9	10	11	12	13
13	14	15	16	17	18	19	20	15	16	17	18	19	20
21	22	23	24	25	26	27	28	22	23	24	25	26	27
29	26	27	28	29				29	30				

Sunday	Monday	Tuesday	Wednesday	Thursday	Friday	Saturday
				1	2	3
PLANT INDOOR SEEDLINGS, PLANT OUTDOOR COOL SEASON VEGETABLES						
4	5	6	7	8	9	10
PLANT OUTDOOR ABOVE-GROUND ANNUAL VEGETABLES AND HERBS						
11	12	13	14	15	16	17
PLANT TUBERS AND ROOT CROPS, FRUIT TREES AND SHRUBS						St. Patrick's Day
18	19	20	21	22	23	24
TRANSPLANT PERENNIALS & PRUNE		SPRING EQUINOX				
25	26	27	28	29	30	31
PLANT OUTDOOR ABOVE-GROUND VEGETABLES, SOW INDOOR SEEDLINGS						



THE GOD OF
DIRT CAME UP
TO ME MANY
TIMES AND
SAID SO MANY
WISE AND
DELECTABLE
THINGS, I LAY
ON THE GRASS
LISTENING.

- MARY OLIVER

"Early Morning Harvest" ©2009 Karel K Hendee

April 2012

March 2012							May 2012						
S	M	T	W	T	F	S	S	M	T	W	T	F	S
				1	2	3							
4	5	6	7	8	9	10	6	7	8	9	10	11	12
11	12	13	14	15	16	17	13	14	15	16	17	18	19
18	19	20	21	22	23	24	20	21	22	23	24	25	26
25	26	27	28	29	30	31	27	28	29	30	31		

Sunday	Monday	Tuesday	Wednesday	Thursday	Friday	Saturday
1	2	3	4	5	6	7
PLANT OUTDOOR ABOVE-GROUND VEGETABLES, HARDY FLOWERS & HERBS, SOW INDOOR SEEDLINGS						
8	9	10	11	12	13	14
PLANT ROOT CROPS SUCH AS POTATOES, BEETS, CARROTS AND FRUIT VINES AND TREES						
15	16	17	18	19	20	21
TRANSPLANT COOL-SEASON ANNUAL VEGETABLES, TRANSPLANT PERENNIALS, PLANT ROOT CROPS						
22	23	24	25	26	27	28
TRANSPLANT HARDY INDOOR SEEDLINGS TO OUTDOOR GARDEN AND PERENNIALS						
29	30					
PLANT OUTDOOR ABOVE-GROUND VEGETABLES, HARDY FLOWERS & HERBS, SOW INDOOR SEEDLINGS						
Easter Sunday						



OUR
RELATIONSHIP
WITH NATURE
IS FOUND
WITHIN OUR
HEARTS AND
SOULS.

- VERONICA RAY

"Circle of Hope" ©2009 Karel K Hendee

May 2012

April 2012							June 2012						
S	M	T	W	T	F	S	S	M	T	W	T	F	S
1	2	3	4	5	6	7							1
8	9	10	11	12	13	14	3	4	5	6	7	8	9
15	16	17	18	19	20	21	10	11	12	13	14	15	16
22	23	24	25	26	27	28	17	18	19	20	21	22	23
29	30						24	25	26	27	28	29	30

Sunday	Monday	Tuesday	Wednesday	Thursday	Friday	Saturday
		1	2	3	4	5
PLANT OUTDOOR ABOVE-GROUND VEGETABLES, HARDY FLOWERS & HERBS, SOW INDOOR SEEDLINGS						
6	7	8	9	10	11	12
☺	PLANT OUTDOOR ABOVE-GROUND VEGETABLES					
13	14	15	16	17	18	19
Mother's Day	☾	CULTIVATE, HARVEST, NOURISH, PRUNE, THIN SEEDLINGS AND PLANTS				
20	21	22	23	24	25	26
●	TRANSPLANT INDOOR SEEDLINGS TO OUTDOOR GARDEN AND PERENNIALS					
27	28	29	30	31		
Memorial Day	☾	PLANT OUTDOOR ANNUAL FLOWERS AND HERBS				



LEARNING TO LIVE
WITH COMPROMISE,
UNCERTAINTY, AND
FAILURE IS ONE
USEFUL GOAL OF
GARDENING. MY
PHILOSOPHY IS:
FORGET WINNING.
CULTIVATE DELIGHT!

- DIANE ACKERMAN

"Sweet Summer" ©2009 Karel K Hendee

June 2012

May 2012							July 2012						
S	M	T	W	T	F	S	S	M	T	W	T	F	S
							1	2	3	4	5	6	7
6	7	8	9	10	11	12	8	9	10	11	12	13	14
13	14	15	16	17	18	19	15	16	17	18	19	20	21
20	21	22	23	24	25	26	22	23	24	25	26	27	28
27	28	29	30	31			29	30	31				

Sunday	Monday	Tuesday	Wednesday	Thursday	Friday	Saturday
					1	2
PLANT OUTDOOR WARM-LOVING ANNUAL VEGETABLES AND FLOWERS						
3	4	5	6	7	8	9
	☺	NOURISH, COMPOST, PLANT ANNUALS				
10	11	12	13	14	15	16
		☾	HARVEST, CULTIVATE, THIN, PRUNE, AND TRANSPLANT			
17	18	19	20	21	22	23
Father's Day		●	SUMMER SOLSTICE		HARVEST, STAKE PLANTS, COMPOST	
24	25	26	27	28	29	30
		☾	PLANT OUTDOOR ABOVE-GROUND ANNUALS			





FARMERS' MARKETS ARE VITAL TO OUR NATIONAL HEALTH IN THE DEEPEST SENSE OF THE WORD. THEY NOT ONLY SUPPLY FOOD THAT IS ALIVE AND TRULY NUTRITIOUS BUT ARE GOOD FOR OUR STATE OF MIND, TOO.

- DEBORAH MADISON

"Eggplant Goddess" ©2009 Karel K Hendee

July 2012

June 2012							August 2012						
S	M	T	W	T	F	S	S	M	T	W	T	F	S
					1	2			1	2	3	4	
3	4	5	6	7	8	9	5	6	7	8	9	10	11
10	11	12	13	14	15	16	12	13	14	15	16	17	18
17	18	19	20	21	22	23	19	20	21	22	23	24	25
24	25	26	27	28	29	30	26	27	28	29	30	31	

Sunday	Monday	Tuesday	Wednesday	Thursday	Friday	Saturday
1	2	3  <i>Independence Day</i>	4	5	6	7
8	9	10	11	12 	13	14
PLAN FOR FALL AND WINTER GARDEN						
15	16	17	18	19	20	21
HARVEST, NOURISH, CULTIVATE, PRUNE, THIN, PREPARE GARDEN FOR PLANTING						
22	23	24	25	26 	27	28
SOW SEEDS FOR SECOND CROPS, SOW INDOOR FLATS FOR FALL						
29	30	31				



NOW I SEE THE
SECRET OF THE
MAKING OF THE
BEST PERSONS.
IT IS TO GROW IN
THE OPEN AIR
AND EAT AND
SLEEP WITH THE
EARTH.

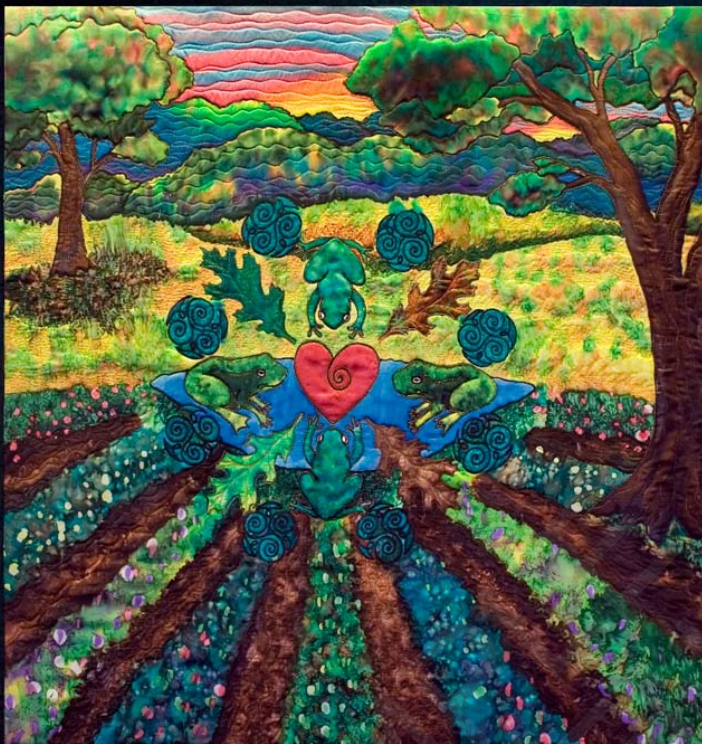
- WALT WHITMAN

"Riverhill Farm" ©2009 Karel K Hendee

August 2012

July 2012							September 2012						
S	M	T	W	T	F	S	S	M	T	W	T	F	S
1	2	3	4	5	6	7							1
8	9	10	11	12	13	14		2	3	4	5	6	7
15	16	17	18	19	20	21		8	9	10	11	12	13
22	23	24	25	26	27	28		14	15	16	17	18	19
29	30	31						20	21	22	23	24	25
								26	27	28	29	30	

Sunday	Monday	Tuesday	Wednesday	Thursday	Friday	Saturday
			1	2	3	4
SOW SEEDS IN FLATS FOR FALL AND WINTER GARDEN				☺		
5	6	7	8	9	10	11
SOW OUTDOORS FOR FALL CROPS				☾		
12	13	14	15	16	17	18
PREPARE BEDS FOR PLANTING, TRANSPLANT FOR FALL CROPS, HARVEST				●		
19	20	21	22	23	24	25
PREPARE GARDEN FOR FALL PLANTING, PRUNE				☾		
26	27	28	29	30	31	
SOW OUTDOORS FOR FALL CROPS				☺		



SOWING THE SEED, MY
HAND IS ONE WITH THE
EARTH. WANTING THE
SEED TO GROW, MY MIND
IS ONE WITH THE LIGHT,
HOEING THE CROP, MY
HANDS ARE ONE WITH
THE RAIN, HAVING
CARED FOR THE PLANTS,
MY MIND IS ONE WITH
THE AIR, HUNGRY AND
TRUSTING, MY MIND IS
ONE WITH THE EARTH,
EATING THE FRUIT, MY
BODY IS ONE WITH THE
EARTH.

- WENDELL BERRY

"Four Frog Farm" ©2009 Karel K Hendee

September 2012

August 2012							October 2012						
S	M	T	W	T	F	S	S	M	T	W	T	F	S
							1	2	3	4	5	6	
5	6	7	8	9	10	11	7	8	9	10	11	12	13
12	13	14	15	16	17	18	14	15	16	17	18	19	20
19	20	21	22	23	24	25	21	22	23	24	25	26	27
26	27	28	29	30	31		28	29	30	31			

Sunday	Monday	Tuesday	Wednesday	Thursday	Friday	Saturday
						1
PLANT OUTDOORS FOR ABOVE-GROUND COOL-SEASON VEGETABLES						
2	3	4	5	6	7	8
	<i>Labour Day</i>	PLANT OUTDOORS FOR ABOVE-GROUND COOL-SEASON VEGETABLES & COVER CROPS				
9	10	11	12	13	14	15
	HARVEST, STORE, NOURISH, DIVIDE AND TRANSPLANT PERENNIALS, TRANSPLANT FALL SEEDLINGS					
16	17	18	19	20	21	22
	REST, ENJOY, STORE, PREPARE GARDEN FOR WINTER, COMPOST					FALL EQUINOX
23	24	25	26	27	28	29
30	PLANT COVER CROPS AND WILDFLOWER SEEDS FOR NEXT SEASON					



HOW WE SPEND
OUR DAYS IS,
OF COURSE,
HOW WE SPEND
OUR LIVES.

- ANNIE DILLARD

"Jammin' and Cannin'" ©2009 Karel K Hendee

October 2012

September 2012							November 2012						
S	M	T	W	T	F	S	S	M	T	W	T	F	S
						1						1	2
2	3	4	5	6	7	8	4	5	6	7	8	9	10
9	10	11	12	13	14	15	11	12	13	14	15	16	17
16	17	18	19	20	21	22	18	19	20	21	22	23	24
23	24	25	26	27	28	29	25	26	27	28	29	30	
30													

Sunday	Monday	Tuesday	Wednesday	Thursday	Friday	Saturday
	1	2	3	4	5	6
7	8 <i>Columbus Day</i>	9	10	11	12	13
14	15	16	17	18	19	20
21	22	23	24	25	26	27
28	29	30	31			

PLANT OVER-WINTERING BULBS & ROOTS LIKE ONIONS, LEEKS, GARLIC, DAFFODILS

HARVEST FALL CROPS, TRANSPLANT PERENNIALS, DIVIDE & TRANSPLANT BULBS & TUBERS

PLANT COVER CROPS AND WILDFLOWER SEEDS FOR NEXT YEAR

Halloween



BLESS OUR HEARTS,
TO HEAR IN THE
BREAKING OF
BREAD, THE SONG
OF THE UNIVERSE.

- FATHER JOHN B. GUILIANI

"Seasons Mandala" ©2009 Karel K Hendee

November 2012

October 2012							December 2012						
S	M	T	W	T	F	S	S	M	T	W	T	F	S
1	2	3	4	5	6								1
7	8	9	10	11	12	13		2	3	4	5	6	7
14	15	16	17	18	19	20		9	10	11	12	13	14
21	22	23	24	25	26	27		16	17	18	19	20	21
28	29	30	31					23	24	25	26	27	28
								30	31				

Sunday	Monday	Tuesday	Wednesday	Thursday	Friday	Saturday
				1	2	3
4	5	6	7	8	9	10
PLANT BULBS SUCH AS ONIONS, LEEKS, DAFFODILS, TULIPS, GARLIC						
11	12	13	14	15	16	17
Veterans Day			REPAIR AND SHARPEN TOOLS AND EQUIPMENT			
18	19	20	21	22	23	24
ENJOY THE WINTER, REST, DREAM, EAT			Thanksgiving Day			
25	26	27	28	29	30	
CLEAN-UP THE GARDEN, MULCH, COMPOST, PRUNE						



THE CORN STALKS ARE
BROKEN, POTATOES ARE
CACHED IN DARK
CORNERS, ONIONS AND
GARLIC BRAIDED AND
HUNG. GOLD PEACHES
IN GLASS AND PLUM'S
RICH RUBY. BLACK PULP
OF BERRIES THICKENED
IN JARS. SPLIT CEDAR IS
STACKED BY THE DOOR
AND THE LAMPS FILLED.
ANCHORED ALL NIGHT
IN THE EYES OF THIS
WIND, THE HOUSE
BILLOWS TOWARD
STARS.

- ALICIA HOKANSON

"Winter Stew" ©2009 Karel K Hendee

December 2012

November 2012							January 2013						
S	M	T	W	T	F	S	S	M	T	W	T	F	S
				1	2	3							
4	5	6	7	8	9	10	6	7	8	9	10	11	12
11	12	13	14	15	16	17	13	14	15	16	17	18	19
18	19	20	21	22	23	24	20	21	22	23	24	25	26
25	26	27	28	29	30		27	28	29	30	31		

Sunday	Monday	Tuesday	Wednesday	Thursday	Friday	Saturday
						1
2	3	4	5	6	7	8
PLAN GARDEN, ORDER SEEDS, PREPARE SEED FLATS						
9	10	11	12	13	14	15
PRUNE FRUIT TREES AND VINES						
16	17	18	19	20	21	22
PLANT INDOOR, FORCING BULBS SUCH AS AMARYLLIS					WINTER SOLSTICE	
23	24 Christmas Eve	25	26	27	28	29
30	New Year's Eve 31	Christmas Day				