



WE CAN GROW IT! 2012 CALENDAR

DEDICATED TO GROWING
AND EATING LOCALLY
AND SUPPORTING
SUSTAINABLE AGRICULTURE

FEATURING THE ART OF
KAREL K. HENDEE

FEATURING THE SILK ART OF **KAREL K. HENDEE**

Be inspired to grow your own delicious, nutritious, and beautiful food, and support a vital, sustainable agricultural network of farmers, markets, and consumers.

The images created by silk artist Karel K. Hendee depict the journey of farming, harvesting, and enjoying the season's bounty. The artwork is a celebration of the local sustainable farms and farmers of Nevada County, California where the artist lives. Included are inspirational quotes from poets, authors, and experts in the field of farming and cooking with local and seasonal foods. Each month also contains information to guide you in your planting and gardening according to the lunar calendar.

"In this calendar, I hope to express the spirit of the farm, and the people who live and breathe the soil, the sun, and the seasons of the land."
- Karel K. Hendee



Karel Hendee is an avid gardener, yoga instructor, and silk artist. She also plays the banjo and upright bass. For artist bio and info on purchasing artwork visit www.karelhendee.com

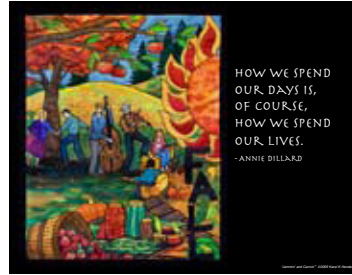
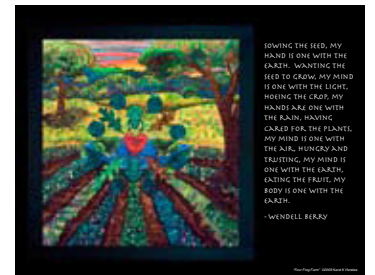
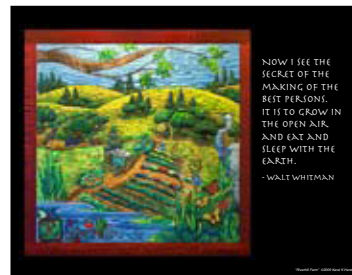
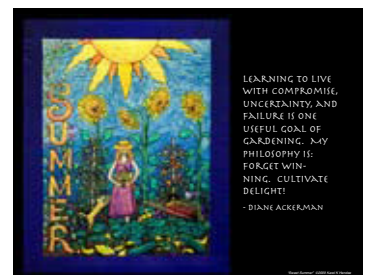
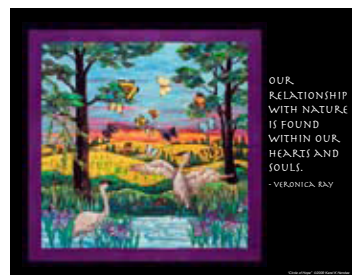
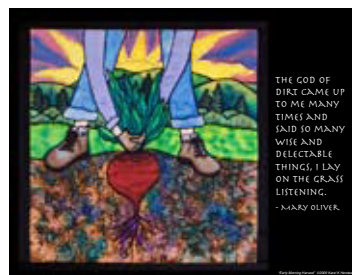
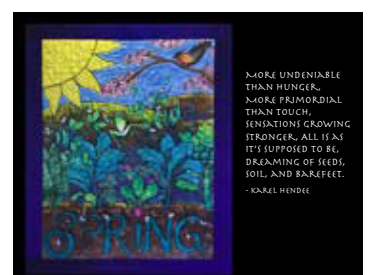
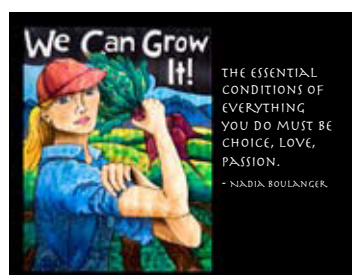
All content ©2011 Karel K. Hendee
Published by Karel Hendee Artworks
karelhendeeartworks@gmail.com
printed in U.S.A.

\$13.99 US



7 28028 12862 8

WE CAN GROW IT! 2012 CALENDAR



Karel Hendee Artworks, saved the following resources by using 553 pounds of Primavera Gloss (FSC) and 1653 pounds of Primavera Gloss (FSC), made with an average of 80% recycled fiber and an average of 60% post-consumer waste, elemental chlorine free and manufactured with electricity that is offset with Green-e® certified renewable energy certificates: 15 fully grown trees, 6536 gallons of water, 4 Million BTUs of energy, 396 pounds of solid waste, and 1357 pounds of greenhouse gases. Calculations based on research by Environmental Defense Fund and other members of the Paper Task Force. www.newleafpaper.com

